

# History of Coffin Butte Landfill

Bailey Payne  
Solid Waste Program Coordinator  
2024



## Early 1900's and Before



Native Kalapuyans inhabit Coffin Butte / Soap Creek area for over 14,000 years

### Early 1700's

European fur trappers are active in the area

### Mid-1800's

Pioneers settle in the area

### Early 1900's

Farming beings; roads built to transport produce to markets



1940's

1955



positional

and

not due

# 1970's



## 1970's

DEQ notes challenges with water and soil conditions. Recommends CBL closure

## 1972-73

Chemeketa Region looks for regional disposal site. CBL emerges as preferred location, despite local residents' opposition

## 1974

Benton County Planning Commission approves CUP allowing for expansion; decision upheld by Benton County Commissioners

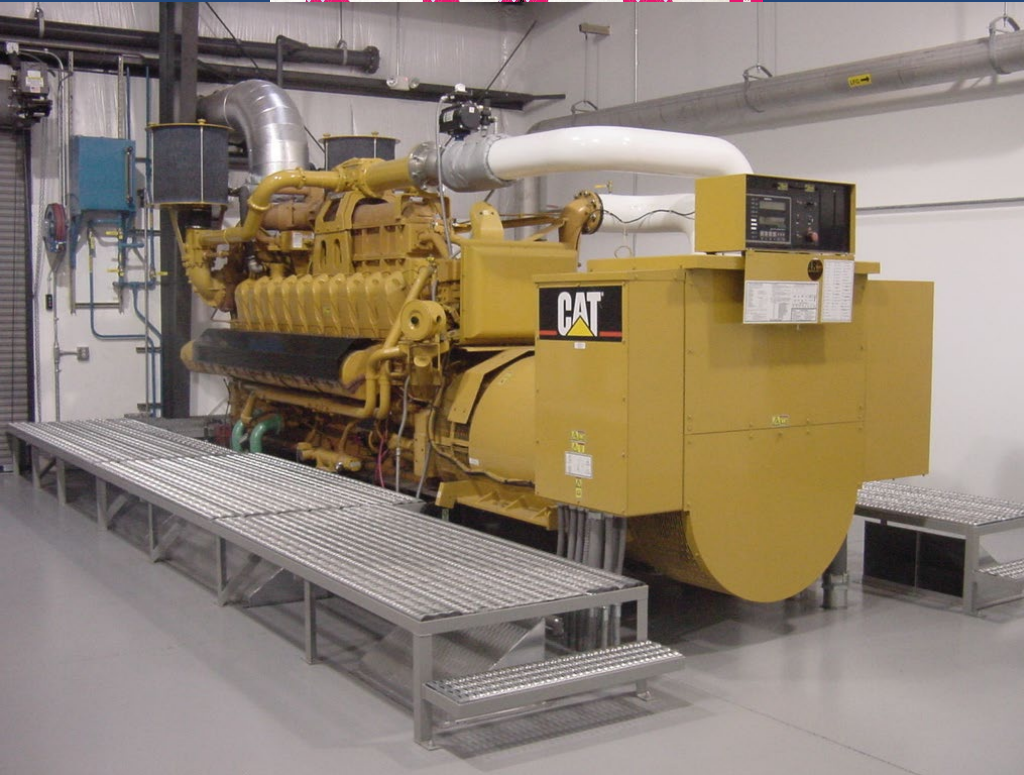
## 1975

Valley Landfills Inc. purchases the Coffin Butte site

## 1977

The old burn dump located within the CBL closes

# 1980's and 1990's



1983

Benton County alters Comprehensive Plan and creates "Landfill Zone" at Valley Landfill's request.

Planning Commission agrees to waste intake from three additional counties; Landfill expands to 194 acres north of Coffin Butte Road

1992

DEQ begins investigating groundwater contamination from Teledyne Wah Chang dumping in the 1970s

1994

CUP granted for 2.2 megawatt power generation facility

Benton County BOC unanimously denies Valley Landfills, Inc. expansion request

1997

CUP granted to expand gas-to-energy facility

1999

"Hot load" spurs large CBL fire

# 2000's



**2000**

Allied Waste acquires Valley Landfills, Inc.

Benton County landfill franchise agreement extended to 2020

**2002**

Benton County and Landfill owners sign MOU requiring prior approval to use land south of Coffin Butte Rd. for waste disposal

**2005**

DEQ issues record of decision on Coffin Butte groundwater mediation; site in compliance

**2007**

Expansion of gas-to-energy facility complete

**2008**

CBL acquired by Republic Services



# 2017 onward



## 2017

Intake tonnage increases from 553,000 tons in 2016 to 941,000 tons

## 2019

Burn dump waste relocation begins

## 2020

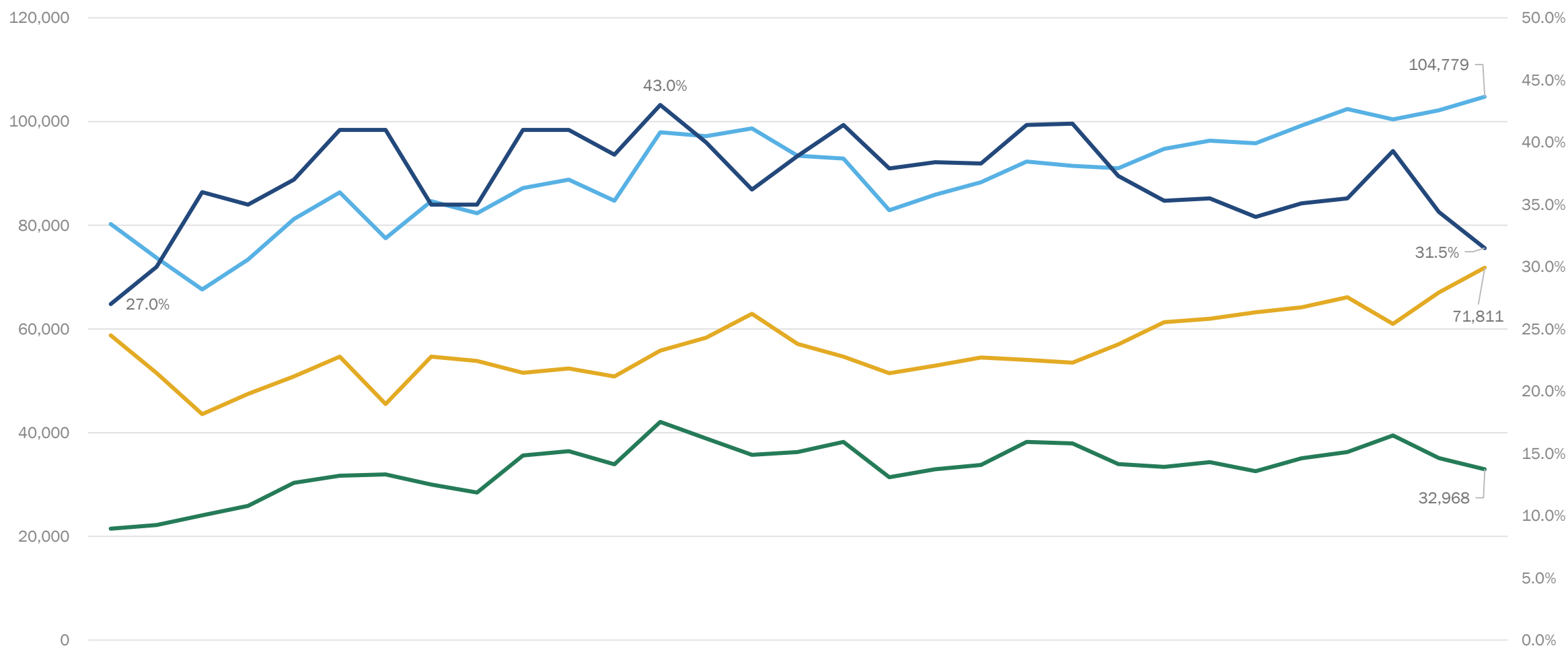
Benton County renews landfill franchise agreement through 2040. Clause includes removal of 1.1 million tonnage cap upon next CUP expansion

## 2021

Wildfire debris causes tonnage to increase again. Annual tonnage continues to be just under cap.

Republic Services files CUP seeking approval to place waste south of Coffin Butte Rd. Expansion request approved by Solid Waste Advisory Council, then denied by Planning Commission

# Benton County Waste Generation & Recovery Rate

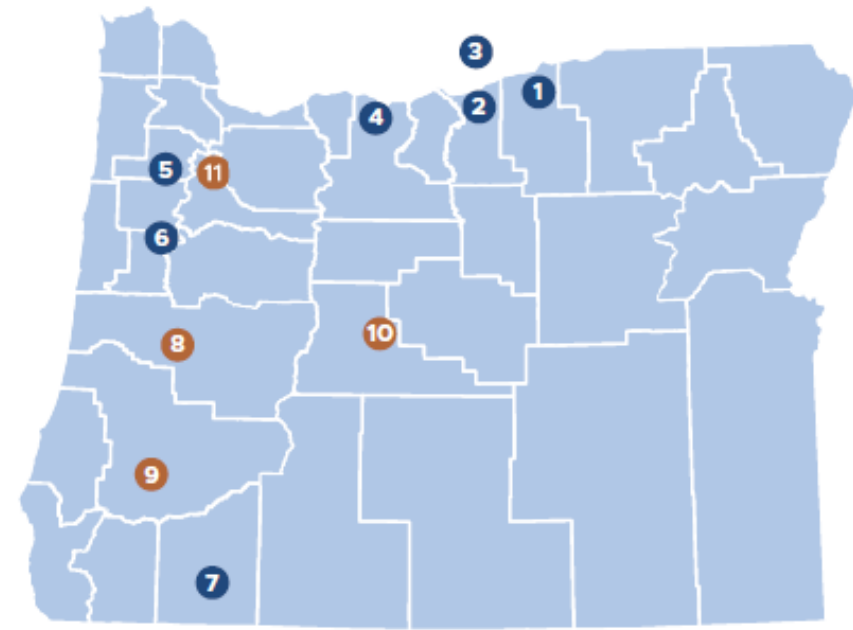


BC Tons Disposed BC Tons Recovered BC Tons Generated Benton County Recovery Rate (w/out credits)



# Coffin Butte Landfill is a regional landfill

A regional landfill is defined as accepting 75,000 tons/year from outside its immediate area. Coffin Butte has been a regional landfill since records were officially kept in 1992.



## Oregon Major Disposal Sites

### REGIONAL

1. Finley Buttes Regional, *Waste Connections*
2. Columbia Ridge Regional, *Waste Management*
3. Roosevelt (WA) Regional, *Republic Services*
4. Wasco County Regional, *Waste Connections*
5. Riverbend Regional, *Waste Management (closing in 2 years)*
6. Coffin Butte Regional, *Republic Services*
7. Dry Creek Regional, *Rogue Disposal*

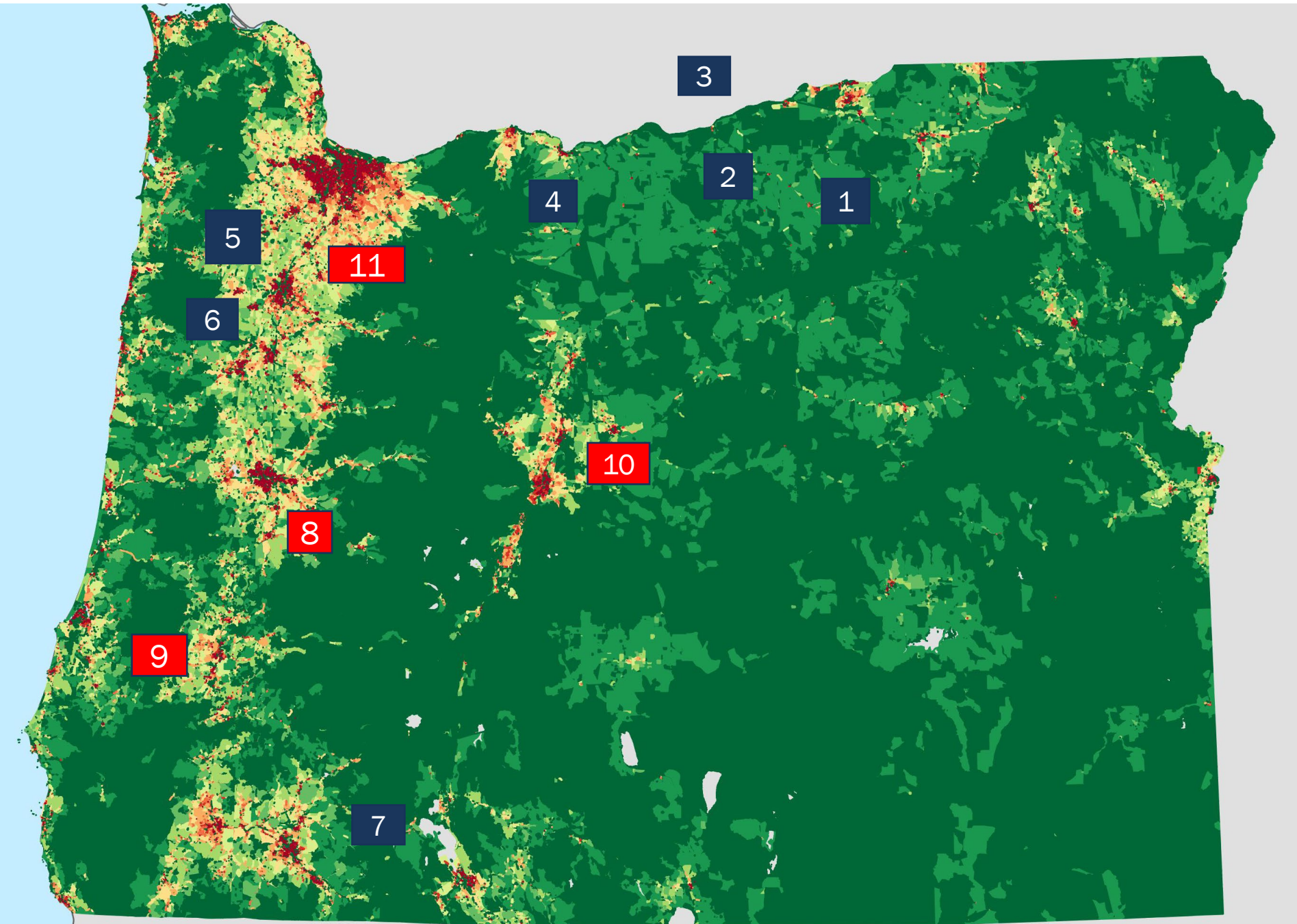
### IN-COUNTY

8. Short Mountain, Lane County
9. Roseburg, Douglas County
10. Knott, Deschutes County *(closing in 5 years)*
11. Reworld Marion, Covanta Holding Corp

# Oregon Major Disposal Sites

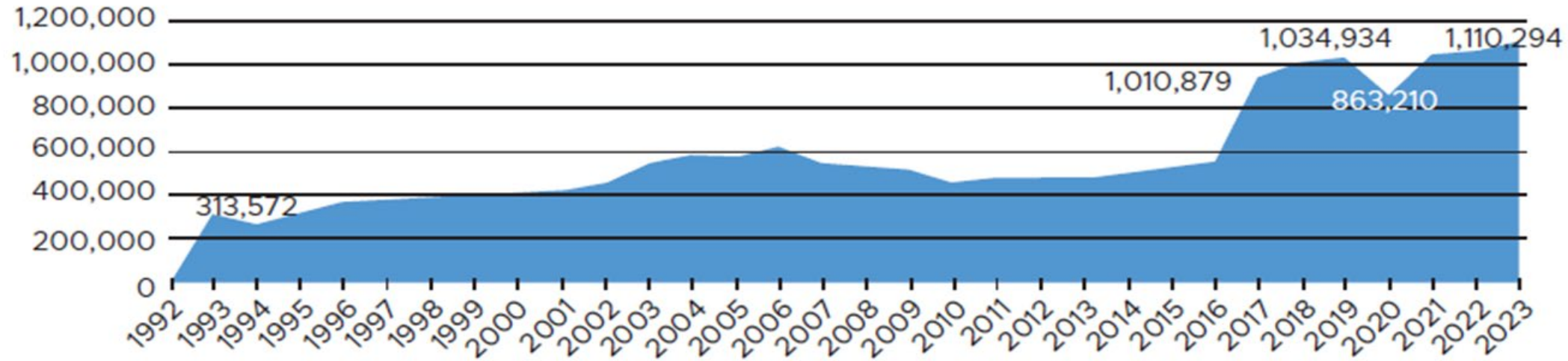
Regional    In-County

1. Finley Buttes Regional, Waste Connections (2217+)
2. Columbia Ridge Regional, Waste Management (2138)
3. Roosevelt (WA) Regional, Republic Services (2117)
4. Wasco County Regional, Waste Connections (2117)
5. Riverbend Regional, Waste Management (2021)
6. Coffin Butte Regional, Republic Services (2039+)
7. Dry Creek Regional, Rogue Disposal (2099+)
8. Short Mountain, Lane County (2158)
9. Roseburg, Douglas County (2029+)
10. Knott, Deschutes County (2029)
11. Covanta Marion, Covanta Holding Corp.

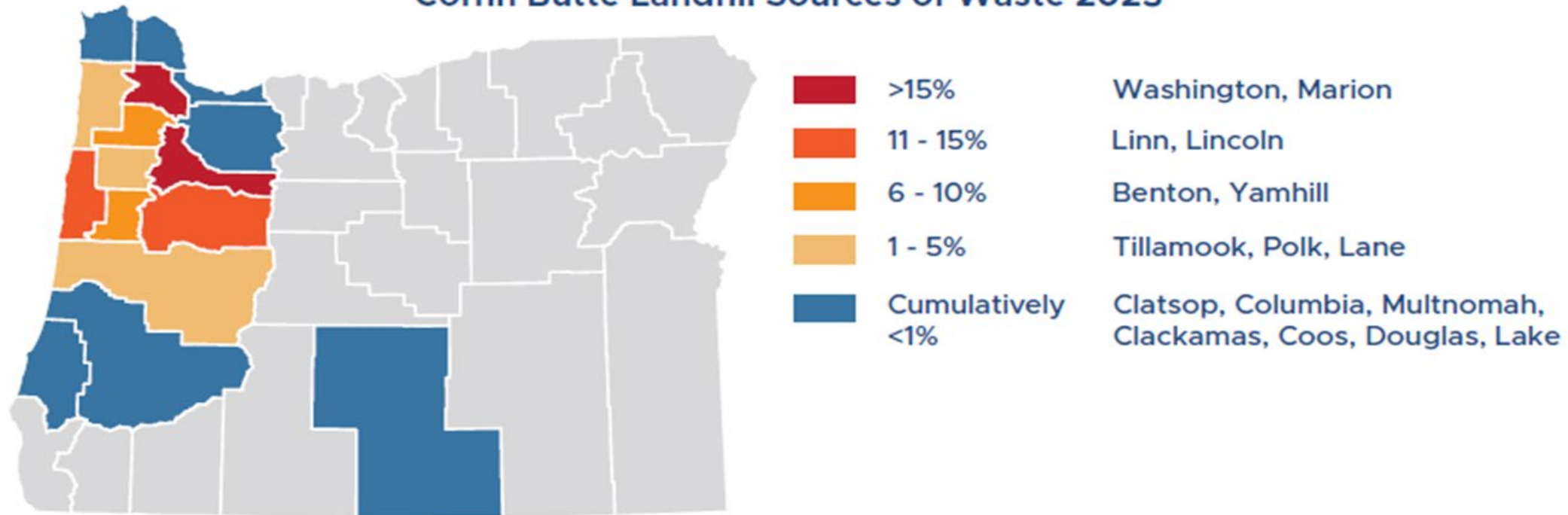




## Coffin Butte Annual Tons (from all sources)



## Coffin Butte Landfill Sources of Waste 2023





A man in a red tank top and shorts is pushing a bicycle on a city street. The bicycle is heavily loaded with large, heavy, cylindrical objects, possibly watermelons or melons, which are stacked on the back. A large pile of plastic bottles is also visible on top of the melons. The background shows a city street with buildings and other people.

Thank you for  
taking this on!





Bailey Payne

Solid Waste Program Coordinator

(541) 224-1339

[Bailey.Payne@BentonCountyOR.gov](mailto:Bailey.Payne@BentonCountyOR.gov)



At your service,  
*every day.*



/BentonCoGov



@BentonCoGov



@BentonCoGov



/BentonCountyGov



Benton County