

**A WALKING TOUR**  
**EVERY-HELM**  
**HISTORIC DISTRICT**



**OVERALL DESCRIPTION**

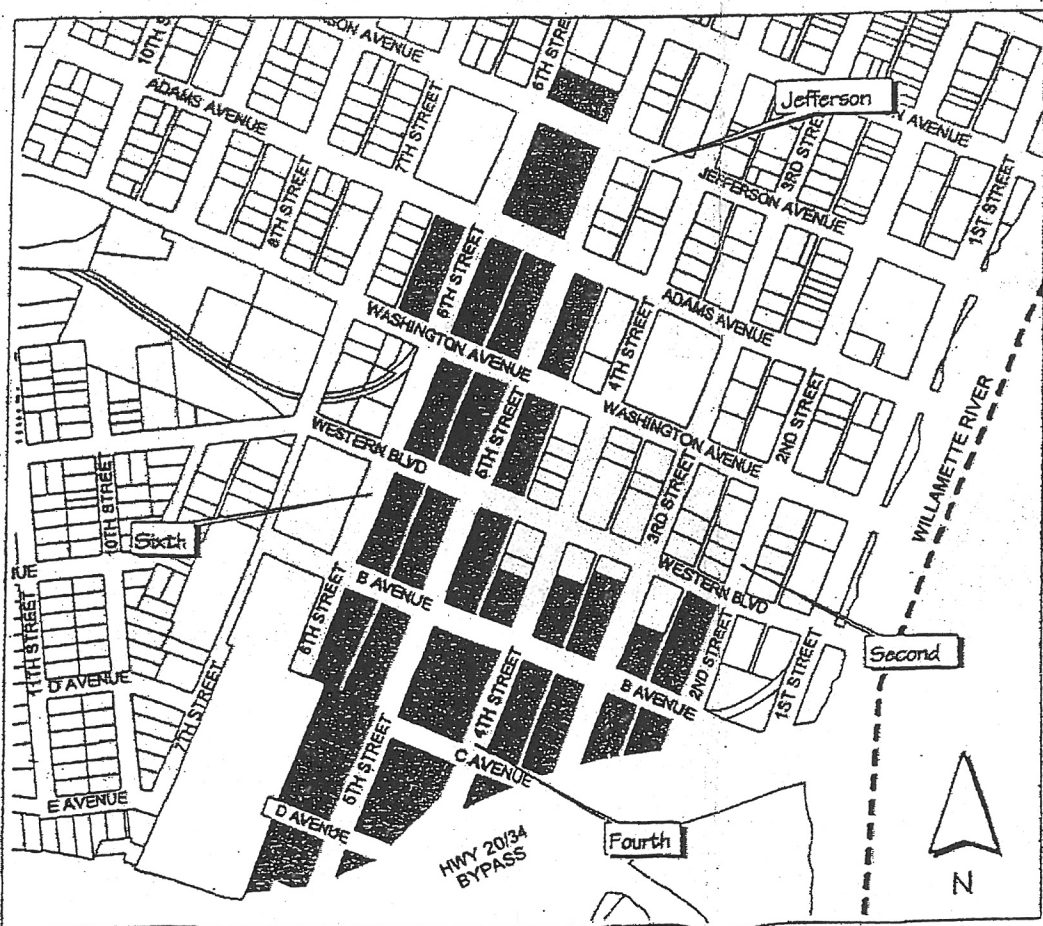
The Avery-Helm's Historic District is situated in southwest Corvallis, which is located approximately 70 miles south of Portland, Oregon and 50 miles east of the Pacific Ocean. Corvallis, located near the heart of the Willamette Valley, is located on a plateau on the west side of the Willamette River. This plateau extends back to the foothills of the Coast Range of mountains, which divides the Willamette Valley from the Pacific Ocean. Corvallis is the seat of Benton County and serves as an important business, transportation, and cultural center for the surrounding area.

The Avery-Helm's neighborhood is part of the Joseph C. Avery land claim filed in 1845. This land claim encompassed 568.35 acres at the confluence of the Willamette River and the Marys River, which runs through the south part of town, just south of the Avery-Helm neighborhood. In 1847-1848, J.C. Avery chained off twelve acres of land near his cabin for town lots. Known as "Little Fields", this was the land that was to become Marysville (platted in 1851 and renamed Corvallis in 1853). These lots were located at the top of the rise above the rivers at the south end of what is now 2<sup>nd</sup> Street. The district is located generally to the south and west of the original Marysville plat (portions of two of these blocks are included in the district).

The district, which includes nine full blocks and ten partial blocks laid out on a grid system, includes all of Avery's Second and the F.A. Helm Additions and portions of Avery's (first) Addition, Avery's Third Addition, County Addition, and the original Marysville plat. The neighborhood is defined, in part, by transportation routes. The railroad right-of-way along 6<sup>th</sup> Street defines the west edge of the neighborhood and the County Road to Philomath (now Hwy 20/34) defined the southern edge of the neighborhood (the recent by-pass construction resulted in the loss of a portion of the neighborhood at the south ends of 3<sup>rd</sup>, 4<sup>th</sup>, and 5<sup>th</sup> Streets). In addition, the Territorial Road, which follows the current route of Highway 99W, passes through the neighborhood along 3<sup>rd</sup> Street. The first bridge across the Marys River was at the south end of 3<sup>rd</sup> Street on the Territorial Road. The neighborhood is also defined, in part, by the downtown business district, which lies to the east and north. Oregon State University lies a few short blocks west of the district.

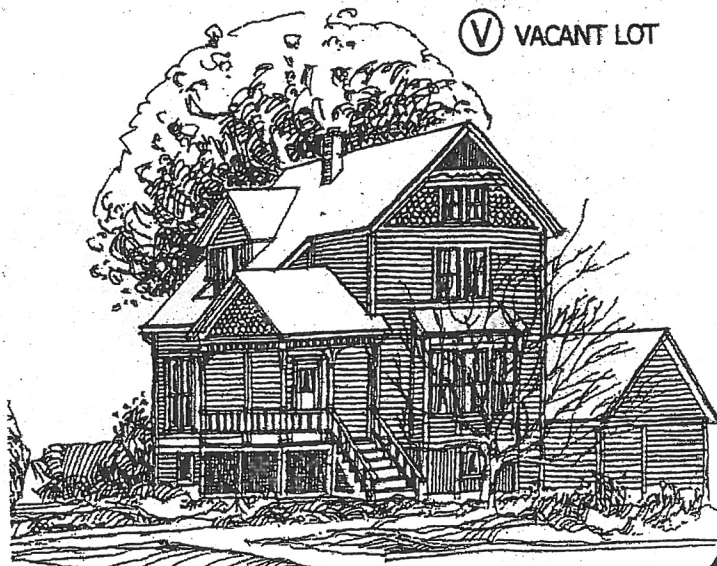
Avery-Helm National Register of Historic Places Nomination

**DISTRICT BOUNDARY MAP**



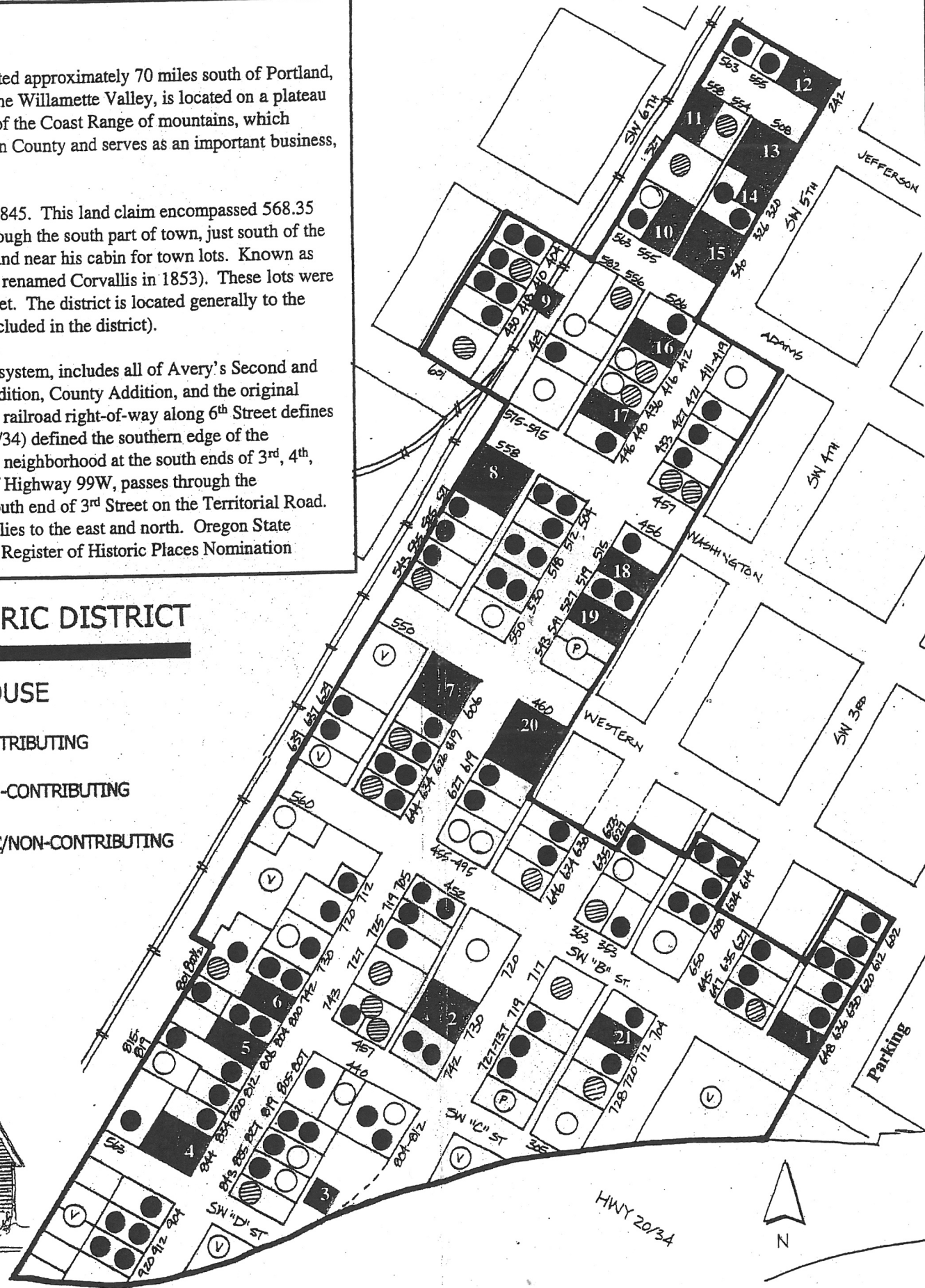
**EVERY-HELM HISTORIC DISTRICT**

- TOUR HOUSE
- HISTORIC/CONTRIBUTING
- ◐ HISTORIC/NON-CONTRIBUTING
- NON-HISTORIC/NON-CONTRIBUTING
- ∇ VACANT LOT

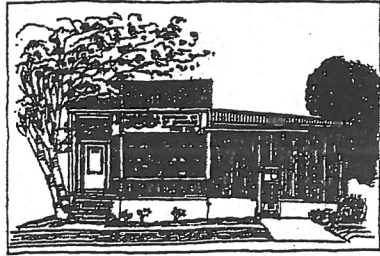


844 SW Fifth Street

Parkerson '03



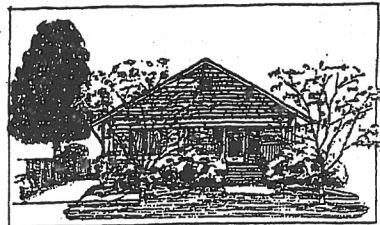
**1. Corvallis Soda Works**



648 SW 2nd

- Constructed: 1924
- Style: Commercial Building
- Used by Pepsi Cola Bottling Co. from 1936-1953
- Used as a hatchery from 1958-1967

**2. Ruth Buchanan House**



730 SW 4th

- Constructed: 1911
- Style: Bungalow with Craftsman detailing
- Built and designed by Charles Heckart
- Heckart also designed many interior features including ornamental hinges and a chandelier

**3. J.C. Avery Black Walnut Tree**



S of 812 4th

- Planted: 1875
- Height: 65-75 ft.
- Another black walnut and two chestnut trees were planted the same year near Avery's home

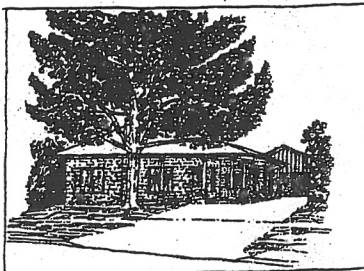
**4. Helm-Hout House**



844 SW 5th

- Constructed: 1895
- Style: Queen Anne with Stick/Eastlake detailing
- House plan from *The Cottage Souvenir*
- Built for Frances (Frankie) Helm, one of J.C. Avery's daughters

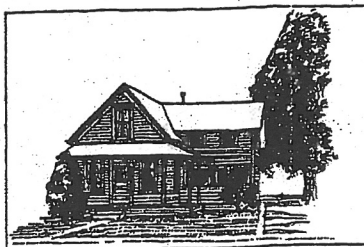
**5. Jack Taylor House**



806 SW 5th

- Constructed: 1907
- Style: Bungalow
- Built with "Miracle Hollow Blocks": Concrete blocks textured and patterned to resemble rock-faced stones

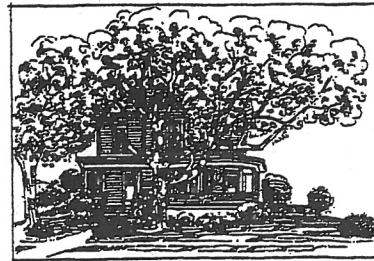
**6. B.L. Arnold House**



800 SW 5th

- Constructed: 1876
- Style: Gothic Revival
- Originally rectangular in shape
- B.L. Arnold was president of OAC (OSU) from 1872-1892
- He served in the Civil War

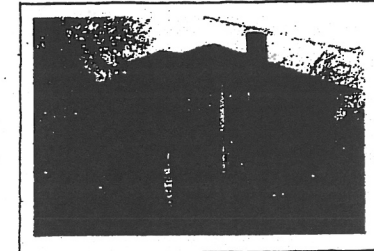
**7. J.H. & Ethel Harris House**



606 SW 5th

- Constructed: 1906
- Style: Queen Anne with Colonial Revival elements
- James Hunter Harris married Ethel Johnson, J.C. Avery's granddaughter
- Their son Gordon was the Mayor from 1959-1962

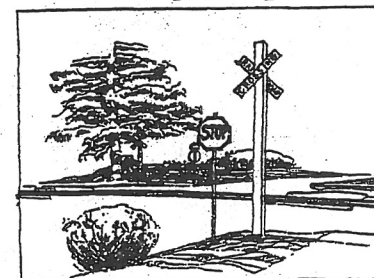
**8. Anne Smith House**



558 SW Washington

- Constructed: 1908
- Style: American Foursquare with Craftsman detailing
- Designed by Charles Heckart
- The family owned over 1000 acres in the Soap Creek area and 8000 acres in Benton and Polk Counties

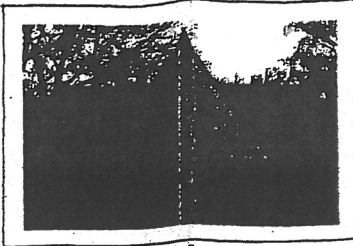
**9. Western Oregon Railway Company**



6th Street

- Constructed: 1879-1880
- RR Co. granted right-of-way on 6th St. in 1879
- First train arrived in 1880

**10. Amanda Brown House**



555 SW Adams

- Constructed: 1939
- Style: Tudor Revival

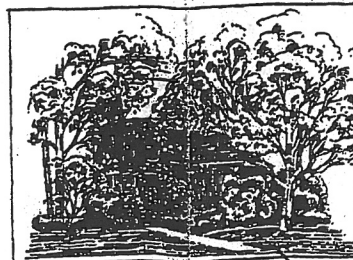
**11. Neil & Lavinia Newhouse House**



558 SW Jefferson

- Constructed: 1902 (house) 1912-1927 (garage)
- Style: Dutch Colonial Revival
- Newhouse became the head sawyer and foreman at Benton County Lumber Co. sawmill

**12. H.S. & Ocie Pernot House & Garage**

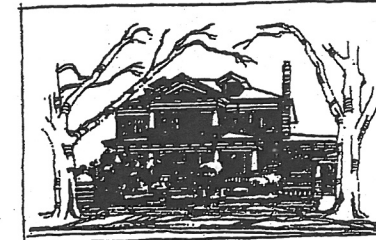


242 SW 5th

- Constructed: 1896 (house), 1923 (garage)
- Style: Queen Anne with Stick/Eastlake ornamentation
- Ocie Pernot, Henry's wife, was J.C. Avery's granddaughter

- Dr. Henry Pernot was a prominent physician and surgeon in Corvallis

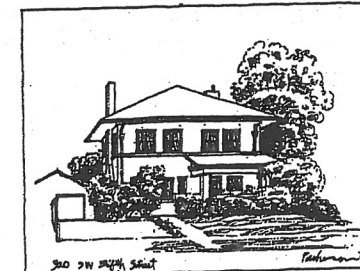
**13. Dick & Louise Kiger House**



508 SW Jefferson

- Construction: 1914
- Style: Colonial Revival
- East chimney has an anchor rod in the form of the Kiger brand

**14. George Whiteside House and Garage**



320 SW 5th

- Constructed: 1925
- Style: Prairie
- His father and brother built and operated the Whiteside Theater

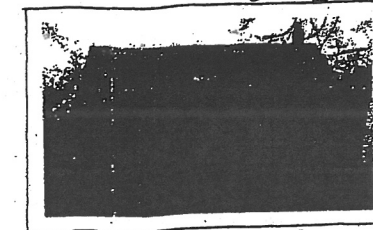
**15. J.O. Wilson House**



340 SW 5th

- Constructed: 1892
- Style: Queen Anne with Stick/Eastlake ornamentation
- J.O. was the county clerk's deputy, and later County judge
- Involved in the O&P RR, of which his father a founder

**16. S.K. & Carrie Hartsock House # 2 & Garage**



412 SW 5th

- Constructed: 1921
- Style: Craftsman-style Bungalow
- Carrie married George Whiteside after their respective spouses died

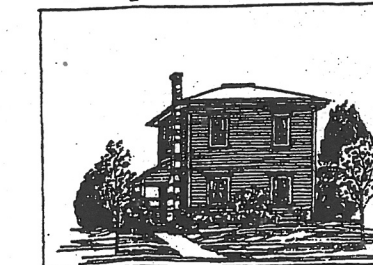
**17. Enoch & Cordia Cone House**



440 SW 5th

- Constructed: 1918
- Style: American Foursquare with Craftsman detailing
- Enoch was treasurer of the Benton County Lumber Co.

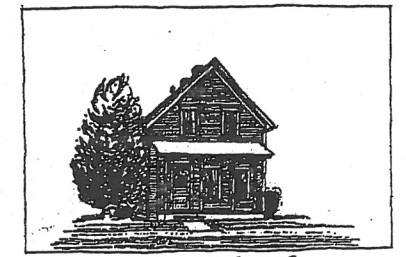
**18. Joseph C. Hunter House**



515 SW 5th

- Constructed: 1880's
- Moved from next lot: 1918
- Style: Italianate
- Hunter owned a profitable gold mine near Canyonville in the 1890's

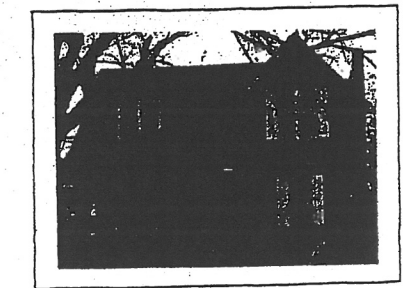
**19. William L. Cauthorn House**



527 SW 5th

- Constructed: 1880's
- Style: Gothic Revival
- Cauthorn moved the house onto this property in 1911

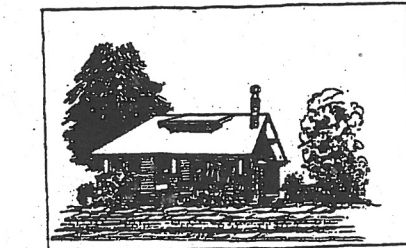
**20. Jesse Huffman House**



460 SW Western

- Constructed: 1877
- Style: Gothic vernacular
- Remodel: 1928-1930
- In 1865 Huffman moved to Corvallis and engaged in sawmilling
- He may have been a business partner of Neil Newhouse

**21. Clarence & May Whiteside House**



712 SW 3rd

- Constructed: 1912
- Style: Craftsman bungalow
- George, Charles, and Samuel Whiteside all lived here at some time