

Merged Member Track Changes
(10/24/22)

**Solid Waste Management Plan (SWMP)
Combined Table of Contents**

Commented [S11]: Change to Materials Resources Management Plan

TRACK CHANGE INPUT REQUEST

Please provide your track changes to the Topics column of this document. You do not need to provide a source. The four source columns are simply for reference. Please attach any supporting documents to your homework email

When done, please label the document [Your Last Name], SWMP TOC, and send it to bentoncountytalkstrash@Co.Benton.OR.US & SamImperati@ICMresolutions.com as a Word document – not a PDF for ease of combining the input... Thanks!

DUE DATE: Thursday, September 22nd at 9:00 AM.

Some members made suggestions about re-ordering topics. Those changes will be considered after we agree on what the topics are. Given this, suggestion specific to re-ordering are not included in this document.

When combining everyone’s documents, all comments became labeled as “Sam Imperati.” However, the text of each comment is colored to credit the member who made the comment, indicated by the color-coding key on the right.

- Member 1 = Light Blue
- Member 2 = Yellow
- Member 3 = Purple
- Member 4 = Dark Blue
- Member 5 = Green
- Member 6 = Pink

Workgroup members should have been given a “big picture” about what a Sustainable Materials Management Plan is before being asked to weigh in on the details.

I think the problems faced by Deschutes are closest to those faced by Benton County. Here is a great snip from the Deschutes plan that would have given workgroup participants a good idea of some of the things that can be addressed in a SMMP:

Source: Deschutes Plan, pp ES 5-6

I think asking workgroup members to weigh in on issues at the level of detail that follows is unproductive. I’ve actually read much of many of these plans, and if I were to try to complete this exercise, I wouldn’t know where to start.

I suggest that the workgroup think about which bigger questions the SMMP needs to address before getting into the weeds like this. That will help the County craft an RFP that will jumpstart the process (this is the jumpstart to the jumpstart).

Questions like:

Merged Member Track Changes
(10/24/22)

- What is worse for the planet? Benton County garbage in a Benton County landfill, or Benton County garbage in a landfill east of the Cascades? (I do not know the answer to this question)
- What is worse for the planet, garbage from outside Benton County in a Benton County landfill, or garbage from outside Benton County in a landfill east of the Cascades? (amazingly, these questions are quantifiable, and quantifying them is one thing that SMMP's do really well)
- How much would rates go up if Benton County garbage is hauled out of the region?
- How does having a landfill fit with Benton County's Vision of itself?

Summary of Key Issues Addressed in the SWMP

The SWMP addresses several key issues related to managing solid waste in the County over the next 20 years. While these issues are a result of changing regulations, some are driven by the impending closure of Knott Landfill. The following is a list of some of the key issues addressed in the SWMP.

1. Currently, the County recovery rate is 33%. What strategies can be implemented that will increase the recovery rate to potentially meet the recovery goal of 45% by 2025?
2. What strategies can be implemented in the near term that might extend the site life of Knott Landfill?
3. Are there proven and reliable technologies that would be cost-effective to implement that would further reduce the County's dependence on landfill disposal?
4. What is the best approach for providing for reliable and cost-effective long-term disposal capacity and should a new landfill be sited in the County, or should the County transfer waste to an existing regional landfill?

ES - 5

5. What investments and improvements are needed at the County's transfer stations to address the long-term system needs and maintain convenient cost-effective services?
6. Are there regional approaches to work with Crook County and provide opportunities to provide cost-effective solutions?
7. What is the timeline for making needed investments in the solid waste system and when do facilities need to be operational?

A full list of the primary issues is presented in Chapter 1, Section 1.3 of the SWMP.

SWAC/DSAC have given us a helping hand in terms of the questions they have submitted to the workgroup, questions like:

- How much methane is the landfill actually producing?
- What about earthquakes and fire?
- What about traffic?

It seems like a much better idea to start with a big picture and then get into the weeds (or as far into the weeds as there is time for) than to do the opposite.

I believe it was the Benton County sustainability coordinator (thank you, person whose name I have forgotten!) who last meeting talked about how he had thought it was important to put together the 2040 Vision Statement. He is right. I have gone to that document many to try to figure out how to think about making the best decisions for the County. Maybe we can take a whack at a vision statement for the SMMP. Then maybe some weeds. I suggest we follow DSAC/SWAC's lead.

I have no topics to add to the following list, and many, many topics to remove.

Merged Member Track Changes
(10/24/22)

I think reports on this end up costing upwards of \$500,000. I think that if this workgroup has 32 hours of meeting time, it is not unreasonable to spend 10-15 hours (roughly 40-50%) getting community input on what should be included in a report that will represent a significant outlay by the County.

As I indicated last meeting, I would be happy to spend 100% of the workgroup time on this important issue.

		Combined Table of Contents				
SECTION	TOPICS	Benton Previous DRAFT	Deschutes	Lane	Marion	Metro
I.	PREFACE					
	A Foreword from leadership					X
	B Acknowledgments (includes roles of all who participated)	X		X		X
	C Acronyms And Definitions			X		X
	D Glossary		X			X
II.	EXECUTIVE SUMMARY		X	X	X	
	A Introduction				X	X
	Chosen length of the plan (i.e 10/20/30 or more years)					
	B State of the Solid Waste Management System: Progress made since last SWMP				X	
	Utilizing our County's strengths: collaboration of the County with OSU, LBCC and other educational institutions for this plan and beyond					
	Linking this plan to the Benton County Vision 2040	X				
	C Purpose and Goals of this SWMP	X		X	X	
	C1 Choice of Conceptual Model for Plan: E.g. is it the traditional inverted triangle (see example Figure 1) or is it something else (see Figure 2 example)	X				
	C2 Area and Forecast of Population covered by this Plan	X				
	C3 Economic impacts: Cost to BC users of SWM services, cost to County government					

Commented [S12]: Recommend 'Foreword from Leadership' moves into Introduction Section, and the other 3 moves to appendices.

Commented [S13]: Not a fan of this section as it is. I much prefer the next section, 'Introduction'. Further, much of it is not related to us since we've never had a SWMP or SMMP. Need to decide is the Plan identifying Recommendations, Goals, and/or Actions?

Commented [S14]: Change to Materials Resources Management Plan

Merged Member Track Changes
(10/24/22)

Combined Table of Contents						
SECTION	TOPICS	Benton Previous DRAFT	Deschutes	Lane	Marion	Metro
C4	Impacts on Coffin Butte Landfill: 10 year forecast of tonnage to be sent to CB from Benton County; impact on CB life					
	Availability of service providers capable of implementing SWMP proposed/required services					
	Description of selection process and qualifications of Plan developers					
	Description of process to obtain serviced community buy-in and ongoing support					
	Shared values guiding the development of this plan					
	D	SWMP Update – Highlights				X
	E	SWMP Recommendations				X
	F	Waste Reduction, Reuse and Recycling Recommendations				X
	G	Processing and Recycling Recommendations				X
	H	Collection and Transfer Stations Recommendations				X
	I	Alternative Technology and Solid Waste Disposal Recommendations - <i>Focusing on different technologies for solid waste management</i>				X
	J	Administration and Enforcement Recommendations				X
	K	Implementation Schedule			X	X
	L	Plan Update Process			X	
III.	INTRODUCTION		X		X	
A	Context of the Plan Update	X	X		X	
B	Plan Purpose and Goals	X	X	X	X	
C	Issues Addressed by the Plan (include discussion of exclusions to the Plan)	X	X	X	X	

Commented [S15]: Remove

Commented [S16]: I think we should really focus on this topic, as well as the possibility of the expansion of the landfill

Commented [S17]: This process should be shared with the public, maybe a plan in here as to how this will be shared with the public as well

Commented [S18]: (explain if this is for Benton County sources or for everything that goes to Coffin Butte)

Merged Member Track Changes
(10/24/22)

Combined Table of Contents						
SECTION	TOPICS	Benton Previous DRAFT	Deschutes	Lane	Marion	Metro
D	A new approach to managing waste	X		X		X
	1) Addressing the full life cycle of materials	X		X		X
	2) Moving From Where We've Been to Our New Vision (provide timeline)	X		X		
	3) The life cycle of products and materials	X				X
	4) The garbage and recycling system	X				X
	5) Leading with equity					X
E	Environmental impacts of products and materials	X				X
	1) Measuring environmental impacts	X				X
	2) Reducing our impact	X				X
F	Values, principles, and vision	X		X		X
	1) Overview					X
	2) Values					X
	3) Principles					X
	4) Vision <ul style="list-style-type: none"> Whose values, Principles, and Vision would this be, the counties or Republic 	X				X
G	Goals and actions					X
	1) Overview					X
	2) Navigating the action tables					X
	3) Shared prosperity					X
	4) Product design and manufacturing					X
	5) Product consumption and use					X
	6) Product end-of-life management					X
	7) Disaster resilience					X
H	Measuring progress					X
	1) Plan Indicators					X

Commented [S19]: Love this, and needs to be included. A major topic this is missing is Local Economic Development. Innovative & sustainable materials is an opportunity for entrepreneurs. "Economy" is mentioned in Section X below, but I recommend it's put here.

Commented [S10]: A lot has changed since the 1977 Plan and still continuing to change. DEQ has multiple Task Forces and Rule Making groups that will be changing our Solid Waste framework. Very important section.

Commented [S11]: remove

Commented [S12]: Needs to be included

Commented [S13]: (use Total Life Cycle Analysis)

Commented [S14]: Should this section be moved up? I think Values & Visions should be at the top.

Commented [S15]: Add some section in here titled neighborhood involvement in the process

Commented [S16]: This seems to be a very relevant section

Merged Member Track Changes
(10/24/22)

Combined Table of Contents							
SECTION	TOPICS	Benton Previous DRAFT	Deschutes	Lane	Marion	Metro	
I	Implementation, compliance, and amendments					X	
	1) Overview	X	X			X	
	2) Roles and responsibilities	X	X	X		X	
	3) The County's Role in Solid Waste Management Planning and Operations	X		X	X		
	4) Oregon statutory requirements	X	X	X		X	
	5) Requirements for local governments	X	X			X	
	6) Plan implementation					X	
	7) Plan oversight					X	
	J	Legal foundation and policy guidance					X
		1) Overview					X
		2) Legal foundation					X
		3) Policy guidance					X
		4) Plan Organization		X	X	X	X
	K	Management Planning Process And Summary	X		X		X
		1) Building On Previous Planning Work			X		
		2) Management Planning Process	X		X		X
		3) Public And Stakeholder Input	X	X	X		
		4) Common Themes Of Public And Stakeholder Input	X		X		
		5) Major Findings From Previous Management Plan Support Document			X		
		6) Valuable Partnerships	X		X		
	IV.	I	BACKGROUND AND WASTE STREAM ANALYSIS	X	X	X	X
A		Introduction		X		X	

Commented [S117]: Add section here or somewhere of the projections for when the landfill/ solid waste management technology will need to be renewed

EX: When the landfill will fill up

Commented [S118]: Important to understand the waste streams to determine potential options or education needs.

Merged Member Track Changes
(10/24/22)

Combined Table of Contents							
SECTION	TOPICS	Benton Previous DRAFT	Deschutes	Lane	Marion	Metro	
	B	Characteristics of the Planning Area Neighborhood's nearby and some sort of analysis of who will be affected	X	X		X	
	C	Description of the Solid Waste Management System	X	X		X	
	D	Summary of Annual Solid Waste Generation	X	X	X		
		1) Refuse Collection	X	X		X	
		2) Transfer Stations		X		X	
		3) Disposal Facilities	X	X		X	
		4) Recycling Facilities	X	X		X	
	E	Current and Projected Waste Stream Composition and Quantities	X	X		X	
		1) Definition				X	
		2) Historical Solid Waste Data	X	X		X	
		3) Waste Stream Composition	X	X		X	
		Waste Stream generation by economic sector (i.e. Industrial, farming, construction, education, medical)					
		4) Waste Stream Generation Forecast a. Economic factors b. Environmental factors (climate change impacts.) c. Global trends in materials and the circular economy	X		X		X
	V.	WASTE PREVENTION/REDUCTION/ REUSE AND RECYCLING ANALYSIS	X	X	X	X	
	A	Introduction		X		X	
B	Background		X		X		
C	Existing Waste Reduction and Reuse Programs	X	X	X	X		
	1) Waste Reduction Programs		X		X		
	2) Reuse Programs		X		X		

Commented [S119]: It would be good to understand all the efforts at work in Benton County

Merged Member Track Changes
(10/24/22)

Combined Table of Contents						
SECTION	TOPICS	Benton Previous DRAFT	Deschutes	Lane	Marion	Metro
	3) Recycling Programs		X		X	
	4) Composting		X		X	
	5) Needs and Opportunities		X		X	
	D Alternatives for Increased Waste Reduction, Reuse, and Recycling	X	X		X	
	1) Enhance Current Promotion/Education/Support Services				X	X
	2) Target Certain Types of Generators or Waste Streams to Increase Diversion by Expanding Basic Services				X	X
	3) Target Recovery of New Materials				X	
	4) Recommendations		X		X	
VI.	RECYCLING AND MATERIALS PROCESSING		X	X	X	
	A Background and Existing Conditions	X	X		X	
	1) Existing Collection and Processing	X	X		X	
	2) Collection and Processing Services	X	X		X	
	3) Processing Facilities	X	X		X	
	4) Yard Debris and Wood Waste Process Facilities	X			X	
	5) Needs and Opportunities		X		X	
	B Alternatives				X	
	1) Processing Recyclable Materials				X	
	2) Recommendations for Collection and Recycling/Processing		X			
VII.	WASTE COLLECTION AND TRANSFER	X	X	X	X	
	A Background and Existing Conditions		X		X	

Merged Member Track Changes
(10/24/22)

Combined Table of Contents							
SECTION	TOPICS	Benton Previous DRAFT	Deschutes	Lane	Marion	Metro	
	1) Regulatory Framework				X		
	2) Local Authority				X		
	3) Existing Collection Services	X			X		
	4) Commercial Waste Collection	X			X		
	5) Transfer Station Operation Approach		X		X		
	6) Waste and Vehicle Volumes to Each Transfer Station			X			
	7) Recycling at Transfer Stations	X	X				
	B	Transfer Station Descriptions		X		X	
		1) Facility Needs		X		X	
		2) Disposal at a New In-County Landfill		X			
		3) Disposal at an Out-of-County Landfill		X			
		4) Other Operation Related Requirements		X			
		5) Collection Considerations for Specific Wastes		X			
	C	Needs and Opportunities		X		X	
		1) Collection Services				X	
		2) Need to Expand Transfer Station Capacity				X	
	D	Alternatives and Evaluation				X	
		1) Increase Commercial Waste Collection of Recyclable Materials				X	
		2) Develop Transfer Stations Capacity				X	
		Comparative costs of landfilling vs. waste to energy vs. recycling					
		Costs to the Franchisee					
		Cost to the County					

Merged Member Track Changes
(10/24/22)

Combined Table of Contents						
SECTION	TOPICS	Benton Previous DRAFT	Deschutes	Lane	Marion	Metro
	Costs to service receivers/customers/rate payers Comparison of different waste disposal and material management governance models					
	3) Recommendations		X		X	
VIII.	ALTERNATIVE TECHNOLOGIES AND SOLID WASTE DISPOSAL		X	X	X	
A	Background and Existing Conditions		X		X	
	1) Introduction		X			
	2) Flow Control				X	
	3) Existing Landfill Disposal		X		X	
B	Waste Stream Projections		X		X	
	1) Waste Disposal Projections				X	
	2) Needs and Opportunities		X		X	
C	Alternatives and Evaluation		X		X	
	1) Alternatives for Municipal Solid Waste (MSW) Disposal		X		X	
	2) Mixed Waste Processing		X			
	3) Technology Summary		X			
	4) Evaluation of Options				X	
	5) Findings and Recommendations		X		X	
IX.	LANDFILL DISPOSAL OPTIONS		X			
A	Background		X			
B	County Authority for Waste Disposal		X			
C	Existing Landfill Disposal And list pros and cons of it		X			
D	Waste Stream Projections		X			
E	Needs and Opportunities		X			
F	Disposal Options		X			

Commented [S120]: VERY IMPORTANT SECTION

Merged Member Track Changes
(10/24/22)

Combined Table of Contents						
SECTION	TOPICS	Benton Previous DRAFT	Deschutes	Lane	Marion	Metro
	1) Long-Haul Waste to Out-of-County Landfills		X			
	2) Option - Site and Build a New In-County Landfill		X			
	3) Evaluation of Disposal Options		X			
	4) Recommendations		X			
X.	ADMINISTRATION AND ENFORCEMENT		X		X	
	A Introduction		X		X	
	B Background and Existing Conditions		X		X	
	1) Solid Waste Administrative Agencies	X	X		X	
	2) Solid Waste Advisory Council (SWAC)				X	
	3) Solid Waste Enforcement		X		X	
	4) Financing and Funding Sources	X	X	X	X	
	5) Economic footprint			X		X
	6) Economic impact					X
	7) System revenue	X				X
	C Needs and Opportunities		X		X	
	1) Management Considerations		X			
	2) Financing and Funding Considerations	X	X		X	
	3) Management Issues				X	
	D Alternatives and Evaluation		X		X	
	Basis for deciding franchise contracts; annual renewals; capital costs					
	1) Administration/Management		X		X	
	2) Finance and Funding				X	
	3) Recommendations		X		X	
XI.	CONCLUSION			X		

Commented [S121]: This could be an important section if changes to flow of materials is changed or "requirements" for recovery are implemented.

Merged Member Track Changes
(10/24/22)

Combined Table of Contents						
SECTION	TOPICS	Benton Previous DRAFT	Deschutes	Lane	Marion	Metro
XII.	RESOURCES			X		

Supporting Figures SWMP TOC Submittal

Figure 1: Oregon DEQ Materials Management Pyramid

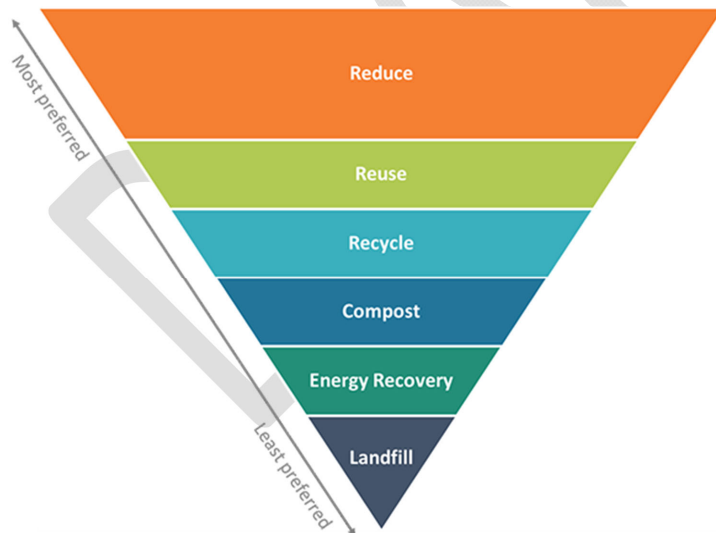


Figure 2 Alternative Materials Management Scenarios (OR is arguably a linear model)

Merged Member Track Changes
(10/24/22)

Source: Landfill Impacts on the Environment—Review; Magdalena Daria Vaverková;
<https://doi.org/10.3390/geosciences9100431>

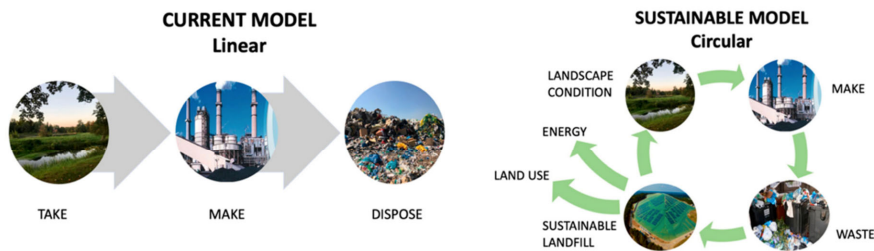
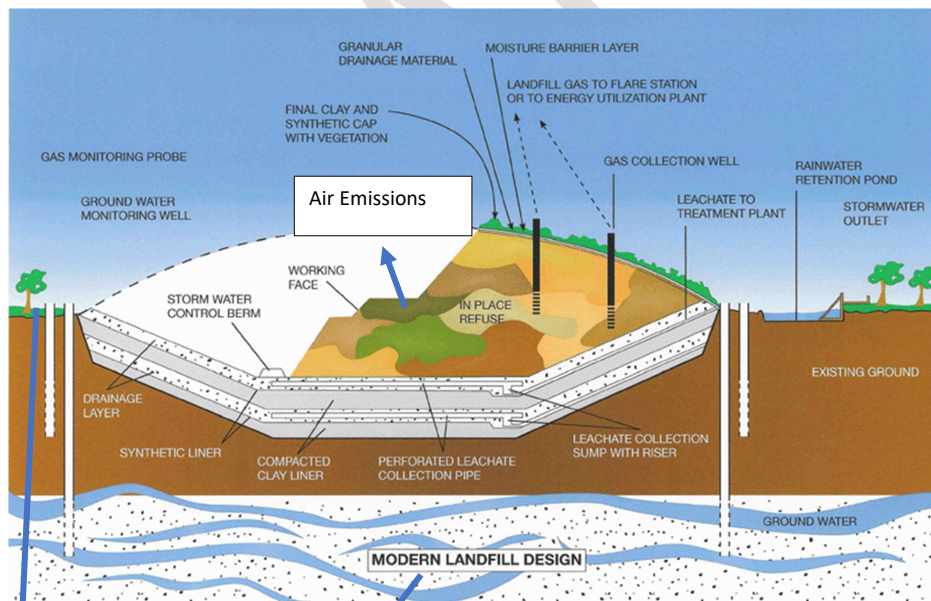


Figure 4. Current and future model of landfilling.

Figure 3: Example Explanatory Cartoon of a Landfill



Example "Explanatory Cartoon of a Landfill"
(needs lots of improvement/clarification)

Merged Member Track Changes
(10/24/22)

Runoff/groundwater
migration to surface
water

DRAFT