

**From:** [Macnab, Ian](#)  
**To:** [REDICK Daniel](#)  
**Subject:** Coffin Butte Cell Dates  
**Date:** Friday, November 11, 2022 11:07:30 AM  
**Attachments:** [Coffin Butte G02 With Cell Dates.pdf](#)  
[Coffin Butte Cell Dates.pdf](#)

---

**CAUTION:** This email originated from outside of the organization. Do not click links or open attachments unless you recognize the sender and know the content is safe.

Daniel,

One of the requests from the landfill life subcommittee meeting was to provide a map or table with the dates that we began filling the various cells. I've added the dates in blue text on the attached drawing G02 from our SDP. I've also created the attached table. Let me know if you think this will work for the group.

Thanks,

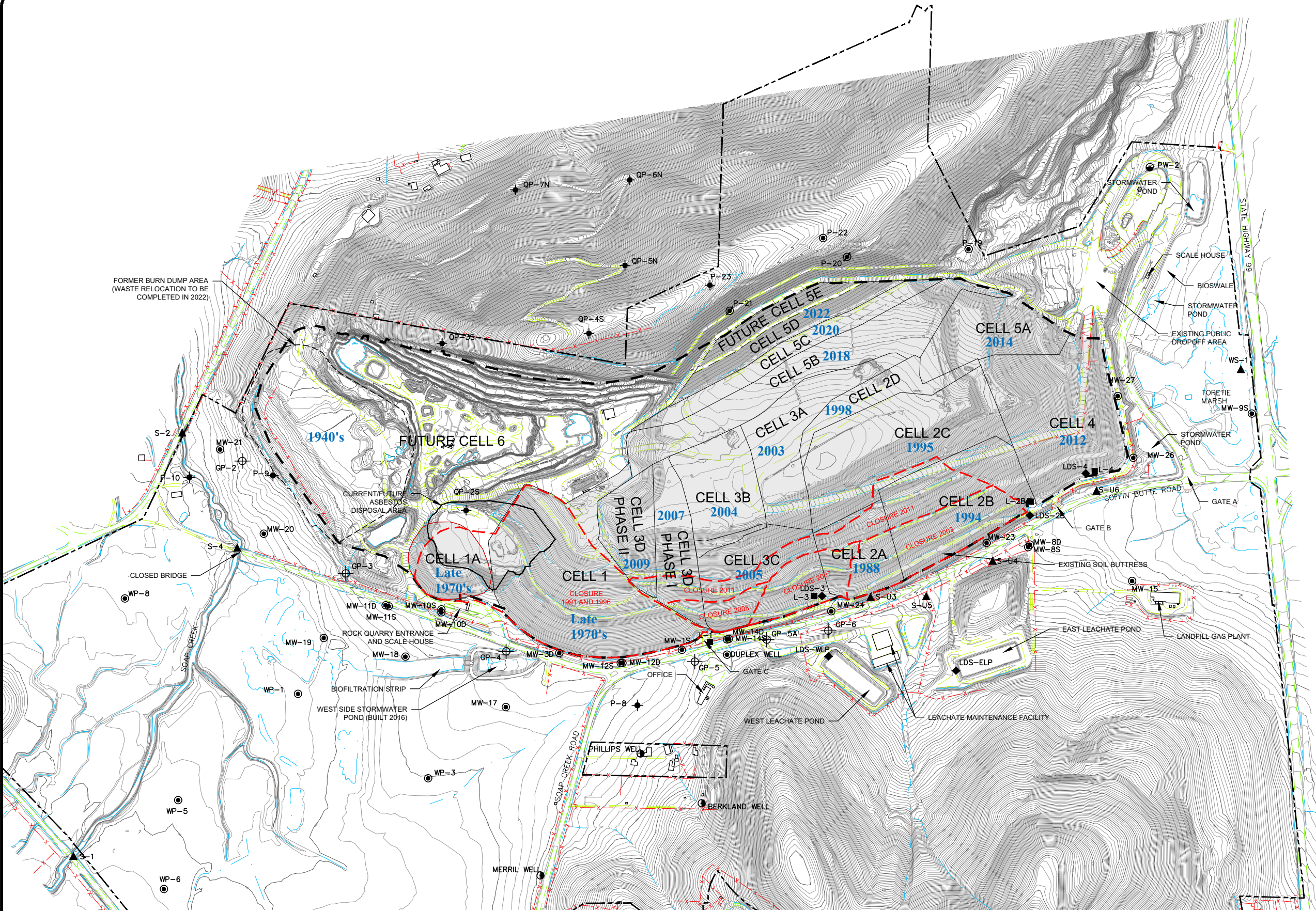
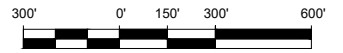
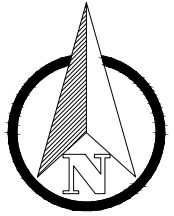
**Ian Macnab**  
Environmental Manager - Oregon

28972 Coffin Butte Rd  
Corvallis, OR 97330  
e [imacnab@republicservices.com](mailto:imacnab@republicservices.com)  
o 541-230-5543  
c 541-230-4022  
w [RepublicServices.com](http://RepublicServices.com)



Sustainability in Action





**LEGEND**

- 300 — EXISTING 10' CONTOUR<sup>(1)</sup>
- 2' — EXISTING 2' CONTOUR<sup>(1)</sup>
- x - x - EXISTING FENCE
- — EXISTING PAVED ROAD
- — EXISTING UNPAVED ROAD
- — EXISTING DRAINAGE
- EXISTING POWER/UTILITY POLE
- \* EXISTING LIGHT POLE
- — PROPERTY LINE
- - - - PERMITTED LANDFILL FOOTPRINT
- - - - EXISTING CELL BOUNDARY
- - - - FUTURE CELL BOUNDARY
- - - - EXISTING CLOSURE AREA
- EXISTING LANDFILL USE
- MW-22 ● GROUNDWATER MONITORING WELL / PIEZOMETER
- PW-2 ● LANDFILL WATER SUPPLY WELL
- QP-35 ● OBSERVATION WELL / PIEZOMETER
- WELL ● PRIVATE WELL
- WS-1 ▲ SURFACE WATER MONITORING POINT
- L-3 ▲ LEACHATE SUMP
- LDS-3 ▲ LEAK DETECTION SYSTEM
- QP-4 ⊕ GAS PROBE

**LANDFILLING STATUS 2021:**

CELLS 1 & 2	FILLED
CELLS 2, 3, 4, & 5A, 5B, 5C, 5D	ACTIVE
CELLS 5E, 6A-6I	FUTURE

- NOTES**
- REFERENCE AERIAL TOPOGRAPHY BASED ON MARCH 30, 2021 AERIAL SURVEY PERFORMED BY COOPER AERIAL SURVEYS COMPANY.
  - WASTE FILL VOLUMES EXCLUDE UNDERDRAIN, SLCRS, PLCS, AND OPERATIONS SOIL VOLUMES.

This drawing has not been published but rather has been prepared by Geo-Logic Associates, Inc. for use by the client named in the title block, solely in respect of the construction operation, and maintenance of the facility named in the title block. Geo-Logic Associates, Inc. shall not be liable for the use of this drawing on any other facility or for any other purpose.

REV. NO.	DATE	DESCRIPTION	APPROVED BY
0	12/30/21	ISSUED AS 2021 PERMIT UPDATE	AO

DATE OF ISSUE: 12/30/2021  
 DESIGNED BY: RPB/AO  
 DRAWN BY: RPB  
 CHECKED BY: JVR  
 APPROVED BY: AO



803 SW Industrial Way, Suite 211, Bend, OR 97702  
 geo-logic.com | 541.678.5733

VALLEY LANDFILLS, INC.



COFFIN BUTTE LANDFILL  
**SITE DEVELOPMENT PLAN**  
 BENTON COUNTY, OREGON  
**SITE PLAN & EXISTING CONDITIONS**

DRAWING NO.  
**G02**  
 PROJECT NO.  
 AU20.1210

ISSUED AS 2021 PERMIT UPDATE

N:\COFFIN BUTTE\AU20.1211 - SITE DEVELOPMENT PLAN (SDP)\J.S. ENGINEERING\1. CIVIL\DRAWINGS\G02 EXISTING SITE PLAN.DWG December 29, 2021 - 3:13 PM BY: GLA USER



<b>Area</b>	<b>Date</b>
Closed Landfill (Burn Dump)	1940's
Cell 1	Late 1970's
Cell 1A	Late 1970's
Cell 2A	1988
Cell 2B	1994
Cell 2C	1995
Cell 2D	1998
Cell 3A	2003
Cell 3B	2004
Cell 3C	2005
Cell 3D Phase I	2007
Cell 3D Phase II	2009
Cell 4	2012
Cell 5A	2014
Cell 5B	2018
Cell 5C	2020
Cell 5D	2022
Cell 5E	Future
Cell 6 (Quarry Area)	Future