

BCTT Neighborhood Tour Minutes 10/1/22

1. Ground Rules

Welcome

Introductions and sign-in sheet for summary minutes.

- 1) This is an educational opportunity to tour the neighborhood.
- 2) It is not a formal WG deliberative event
- 3) We are observing – not making editorial comments
- 4) This is NOT a forum to rehash the last CUP or gain tactical advantage in the next
- 5) The Charter’s Commitments apply, e.g.,
 - a. Speak respectfully and ask constructive questions
 - b. Explore – Don’t debate
 - c. Self-regulate and help others do the same
- 6) Let’s create common understandings by learning together
- 7) Let’s get to know each other as community members, and perhaps, have some fun doing so
- 8) I’m here to ensure this event is productive and collaborative

2. Attendance

- | | |
|--------------------|-------------------------|
| 1. Kevin Kenaga | 11. Darren Nichols |
| 2. Marge Popp | 12. Liz Irish |
| 3. Ken Eklund | 13. Kirk Rensmeyer |
| 4. Debi Gile | 14. Catherine Biscoe |
| 5. Joel Geier | 15. Faye Yoshihara |
| 6. Louisa Shelby | 16. Nancy Whitcombe |
| 7. Mary Parmigiani | 17. Jennifer Brown |
| 8. Debbie Palmer | 18. Judy Sunquist (+ 1) |
| 9. Andy Sterling | 19. Paul Nietfeld |
| 10. Edward Pitera | |

Facilitation Staff:

ICM Resolutions	Sam Imperati	X
ICM Resolutions	Adam Meyer	X
ICM Resolutions	Amelia Webb	

3. Minutes

10:00 AM (22-person group assembled at Adair Park)

BCTT Neighborhood Tour Minutes 10/1/22

- Sam gave introduction
- Participant Introductions + sign-in sheet went around
- Joel (tour guide) began with some geology, local history, and comments about the community.

10:15 AM (Loaded bus – driven by William)

- Joel + Nancy provided comments on topics including bird watching, disc golf, airport for model airplanes, Baptist church, Christian school, local geology and fault lines.

10:25 AM (1st bus stop with 3-mile view of landfill)

- Discussion topics: tree cover, property siting, and buffer lands.
- Comments about tradeoffs between reducing exposure to wildfire risk, versus retaining trees to screen impacts of the landfill (visual, sound, or odor).

10:30 AM (Back on bus)

- Discussion topics: vehicle traffic, Yamhill landfill, Red Barn Farm, composting facility, WWII maintenance shed, zoning and land use.

10:40 AM (2nd bus stop at archery range)

- Discussion topics: terracing v. continuous slope, vegetated or productive slopes, settling and gasification process, zoning and siting of landfills.

11:10 AM (Bus stop at Bit By Bit horse farm)

- Tour by owner of barn and outside area
- Farm is a non-profit since 2015 run by volunteers to provide a place for kids with disabilities.
- Discussion of noise from landfill and road v. forest fire danger.

11:30 AM (Back on bus)

- Views of the quarry
- Discussion topics: leachate facility, republic's office, invasive species, properties purchased by landfill, OSU beef ranch, monitoring wells and water contamination.

11:50 AM (Historic school house stop)

- Kevin Higgins, a firefighter with the Sherriff's office gave a talk on growing up in the area, landfill fires, types of items in landfill, and DEQ.
- Video testimony was played from Priya Tucker, of Rising Joy Flower Farm.
- Elizabeth Pott, a local resident spoke, as well.

12:35 PM (Back on bus)

- Discussion topics: affordable housing and local buildings.
- Skipped beef ranch because of time and returned to Adair Park

BCTT Neighborhood Tour Minutes 10/1/22

12:45 (arrived at Adair Park and picnic)

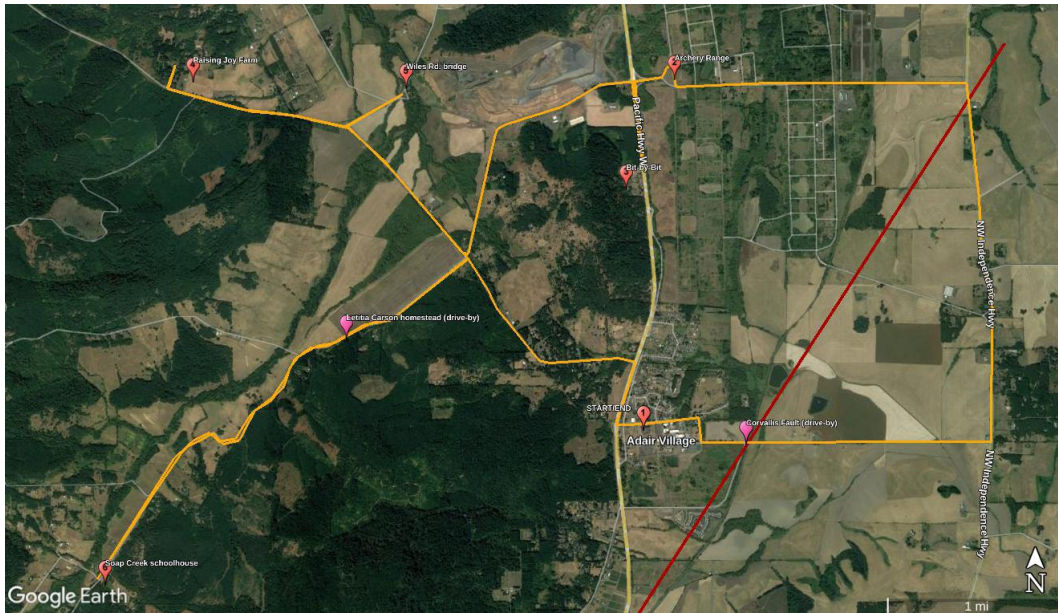
- *Tour participants asked to provide questions to Sam via email by Tuesday at noon.*

Great Lunch... Thanks!

4. Other Materials

- a) **Tour Guide: (provided by Joel) Pages 3 – 8**
- b) **Tour Photos (provided by Facilitation Staff). Pages 9 - 10**

Tour Guide for North Benton County neighborhoods near landfill site



Overview of tour route with locations of main stops. See back page for detailed map.

Adair County Park (our starting point): Noted for its disc-golf course, a resident colony of acorn woodpeckers, and a nearby aerodrome for model airplane enthusiasts.

Palestine Baptist Church: Built in 1883, this is one of the oldest surviving church buildings in Benton County. In 2010 it was relocated to Adair Village to allow expansion of the North Palestine Cemetery. https://www.oregonencyclopedia.org/articles/north_palestine_baptist_church_benton_county/

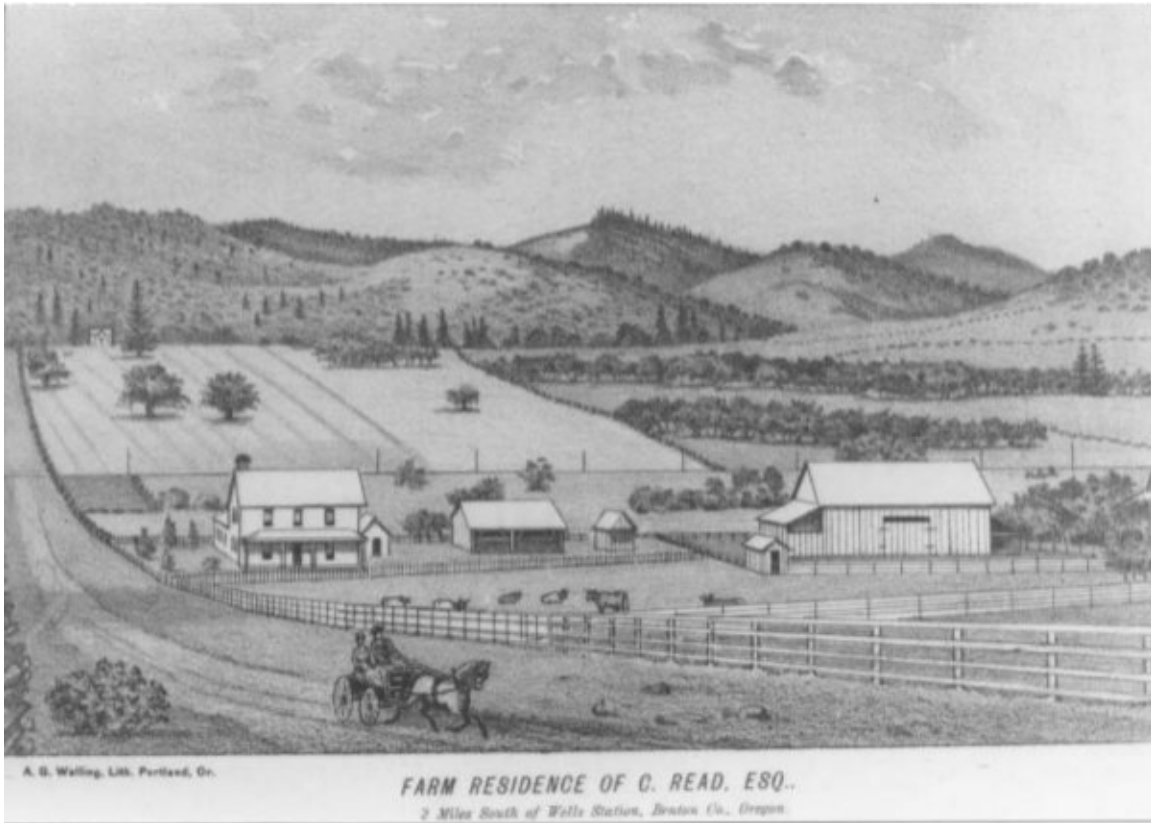
Santiam Christian School: Non-denominational Christian K-12 school founded in 1979, currently enrolls about 650 students.

Corvallis Fault: One of the longest geological faults in the Willamette Valley, extending 30 miles from the Alsea area through Philomath, NW Corvallis, Lewisburg, and continuing northeast to the Willamette River bluffs near Luckiamute State Natural Area. In late Eocene times (about 30 million years ago) a slab

BCTT Neighborhood Tour Minutes 10/1/22

of volcanic rocks from the Siletz formation were pushed southeastward over the top of sedimentary rocks. Coffin Butte, Tampico Ridge, and Vineyard Mountain are on the upper side of the fault, at the edge of the Coast Range. The fault was active at least into the late Pleistocene, and might still be capable of producing earthquakes. We will cross the fault as we go over the railroad tracks, and again later in the route.

Ryals Road: This road passes through rolling farm country just north of Calloway Creek and Bowers Slough, which flows into the Willamette River near Hyak Park. We'll pause at the intersection with Independence Hwy (county gravel pile), to look back across the landscape.



Landscape drawing by James T. Pickett, 1885, looking west toward present site of Adair Village from a point near the east end of Ryals Road. The south end of Tampico Ridge is visible at the right edge of the drawing. The hills at left are now part of McDonald Forest. The peaks in the background are in Dunn Forest, beyond the Soap Creek Valley.

Palestine Road: We won't stop here due to busy traffic along Independence Hwy. One mile east of our route along Palestine Road is the hilltop cemetery where the North Palestine Church formerly stood, with grave markers dating to the 1880s.

Camp Adair Road: This road will take us through the middle of Camp Adair, which was a U.S. Army facility for troops training for combat in World War II, housing up to 45,000 personnel from 1942 to 1945. We'll pause at the county gravel pile at the east end of the road for an overview. There are several places to note as we proceed west.

BCTT Neighborhood Tour Minutes 10/1/22

Red Barn Farm: This barn was used by the Army for horses and dogs in training for military purposes. The smaller white house behind the barn is one of the few per-war houses that were left standing after the Army evicted most local farm families, either bulldozing the farmsteads or reducing them to rubble in training exercises.

Oregon Fish & Wildlife Maintenance Shop: The large sheet-metal shed on our left, just after we cross the railroad tracks, is one of the few Camp Adair buildings still in use. Behind it (no longer standing) was a stockade used to house German POWs who were considered to be the most incorrigible Nazis, shortly after the war. Other POWs considered to be lower risk were used as agricultural workers on nearby hops farms etc.

Pacific Region Composting (PRC) : This open-air composting facility is on land that previously belonged to the City of Adair Village. Originally a small facility to handle yard waste and scrap wood from nearby counties, in the past two decades it has expanded into an industrial-scale facility taking waste from a wider region.

World War II Memorial Park: Just past a gravel parking area (for a trail leading to a popular angling pond) is a small memorial park with monuments in memory of the "Triangular Division" troops who trained at Camp Adair before deployment to the war in Europe.

Gamebird pens: Next to the memorial park is a row of pens with mainly exotic gamebirds such as golden pheasants. Interpretive panels explain the role of this site in the historical introduction of ring-necked pheasants to North America. A massive old oak tree north of the pheasant pens is all that's left of the former town of Wellsdale.



*Downtown Wellsdale in 1941, shortly before the town was demolished to make way for Camp Adair.
Photo by Ben Maxwell (part of the Ben Maxwell Collection, Salem Library).*

E.E. Wilson Wildlife Area headquarters: E.E. Wilson Wildlife Area is named for a former judge and hunter from Corvallis who supported the effort to introduce pheasants, starting with a few birds brought

BCTT Neighborhood Tour Minutes 10/1/22

across the Pacific from China in wicker baskets. This is now, acre-for-acre, one of the most popular hunting and fishing sites in Oregon, and is also popular for walking, biking, and nature observation outside of the fall hunting season.

Archery Range: We will stop here for a closer view of the landfill as neighbors and visitors to the wildlife area see it. **This stop has vault toilets if anyone needs to use those!** From here we can also glimpse some of the older, WW II era quarries and native oak savanna habitat on the part of Coffin Butte that has been protected as part of the wildlife area. Credit for protecting habitat on that part of the butte goes to former neighbor Dave Budeau, who served as wildlife area manager in the 1990s.

Bit By Bit: Next we'll visit this local non-profit that provides equine therapy services to children and adults with special needs. Here we'll also get a close-up view of Tampico Ridge, just downhill from an artesian spring. This marks the east end of a ridgeline trail system that the indigenous Kalapuya people used historically to travel all the way from the Willamette Valley to the coast (Yaquina Bay and Siletz Bay areas).

Double fuel-tanker spill site: Heading back north on Hwy 99W, we'll pass through the site where a semi pulling twin tanks of diesel and gasoline went off the highway in July of 2017, spilling ~90,000 gallons of fuel on the uphill side of the highway. DEQ's emergency contractors initially tried to excavate contaminated soil on that side, but finally had to tear up the whole highway and "chase the plume" out into the prairie east of the highway. Traffic was backed up for more than a month as trucks lined up to haul load after load of contaminated soil up on the landfill for disposal. The dense Douglas-fir plantation west of the highway is zoned as "Forest Conservation" land.

Coffin Butte Road: We'll stop briefly next to a remedial wetland that was dug out to compensate for landfilling over existing ponds. The hybrid poplars south of the road are where Great Blue Herons have nested, in addition to a stand of tall conifers farther west. Beyond there, after we pass the facility for loading leachate onto tanker trucks, and the landfill office (formerly a home site), we'll stop briefly just outside the quarry entrance to discuss landfill impacts on residential areas on this side of Tampico Ridge.

Blaze Drive: We might not be able to take the bus up this road, depending on time. It was initially built as the access road for the "Tampico Ridge" rural housing development, but most lots were vacated after being purchased by VLI.

Tampico: As we turn right onto Tampico Road, the flagpole and historical plaque at right mark the site of Tampico, an early rival to Corvallis (known then as Marysville). By 1857 Tampico was a lively 8-block town with a post office, store, hotel, school, blacksmith shop, livery, saloon, and horse-racing track. In 1860 a wealthy Corvallis landowner named Green Berry Smith (remember that name!) acquired the land and vacated the town.

Applegate Trail: Here Tampico Road follows the route of the Applegate Trail, a route used by emigrants as an alternative to the Oregon Trail, passing through Medford ending up near Dallas in Polk County. With further settlement, this became part of a major stagecoach route between California and the Willamette Valley.

https://www.nps.gov/cali/learn/historyculture/upload/The_1846_Applegate_Trail_at_Emigrant_Lake-508.pdf

BCTT Neighborhood Tour Minutes 10/1/22

OSU Soap Creek Beef Ranch: Heading northwest on Tampico Road, the pastures on the left side of the bus are part of research ranch operated by OSU's rangeland science department.

Letitia Carson Homestead: Letitia Carson, a formerly enslaved person, and her Scottish immigrant husband David Carson were among the first homesteaders in the Soap Creek Valley. Where the Applegate Trail veered south to ford Soap Creek just south of our route, Letitia ran a successful cattle farm, marketing meat and produce to travelers who arrived in later wagon trains. David died within a few years. Green Berry Smith, acting as executor for David's estate, sold all of the young family's belongings including Letitia's cattle and even personal items at auction. Letitia had to use savings from her farm stand to buy back her own cookware and clothing. Smith, one of Corvallis' local proponents for slavery, infamously commented that she was lucky that in Oregon Territory he couldn't sell her and her two children back into slavery. She eventually resettled in the Umpqua Valley where she became the only Black woman to successfully "prove up" a homestead in the Territory. The Letitia Carson Legacy Project at OSU is working to draw attention to her remarkable story, with a long-term goal to establish an interpretive site on OSU's Soap Creek Ranch.

Trillium Lane: As we approach Trillium Lane where we'll turn around, out to the right we'll see the flower beds and greenhouses of Raising Joy Farm, a small family farm that sells fresh flowers to florists at the Portland Flower Market. We won't be able to visit the farm due to liability issues, but later on we can view a video statement by one of the owners. About 28 families live along this lane.



1885 landscape drawing by James T. Pickett, looking east toward Coffin Butte and Mt. Jefferson from near present-day Trillium Lane.

Wiles Road: After a short detour north, we'll get out for a short stroll along the road near the vacated end of Coffin Butte Road, the former Helms home site, and the Soap Creek bridge.

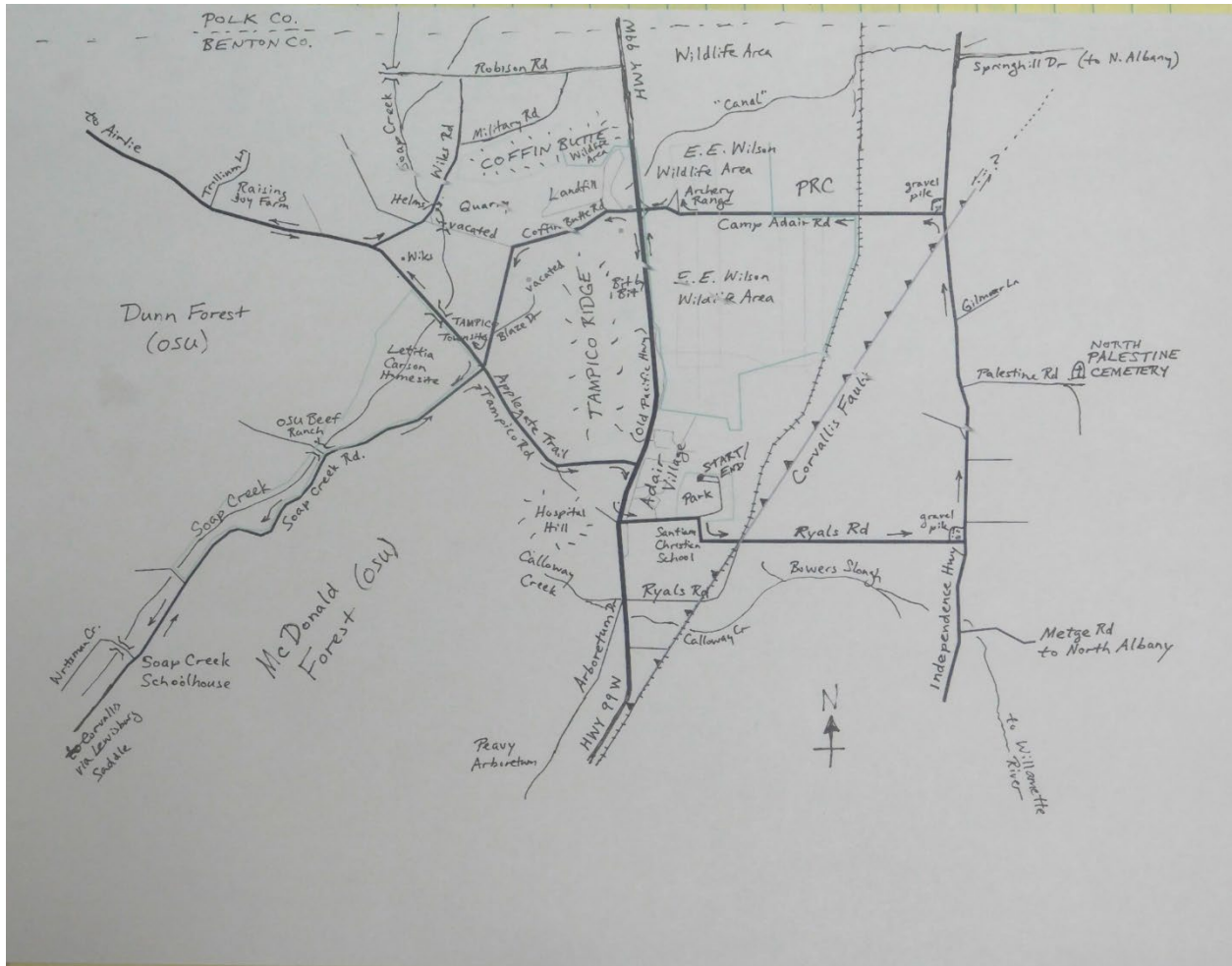
Soap Creek Road: On our way to our last major stop at the historic Soap Creek school house, we'll pass through Letitia Carson's homestead. If we can get permission from OSU, we might be able to detour up to the beef barns to get another view of her homestead. At the schoolhouse, we hope to have a short

BCTT Neighborhood Tour Minutes 10/1/22

video clip about the flower farm that we didn't manage to visit, and we'll have a chance to peruse some of the historical photos on the walls.

Return to Adair Village via Tampico Road: We'll be back on the historical Applegate Trail as we head back to Adair Village, then turn south on Hwy 99W and east through "downtown" Adair Village. One of the most prominent buildings is a massive concrete building that housed a U.S. Air Force radar station during the Cold War.

Picnic: Back at the park there will be a community-hosted picnic for the group.



BCTT Neighborhood Tour Minutes 10/1/22

BCTT Neighborhood Tour Minutes 10/1/22

Tour Photos



BCTT Neighborhood Tour Minutes 10/1/22

